

# mix

design  
colour & texture  
interiors  
architecture  
industrial  
automotive



## New Colour Focus

**International Design Trends for  
Autumn Winter 2011/12 Part 2**

Retro Cars

**Marc Thorpe Interview**

South Africa Report

**Intellectual Property**

THE MAGAZINE FOR COLOUR, DESIGN & TRENDS FROM GLOBAL COLOR RESEARCH™

ISSUE 22 FOUR 2010

€19.50/£17/\$24



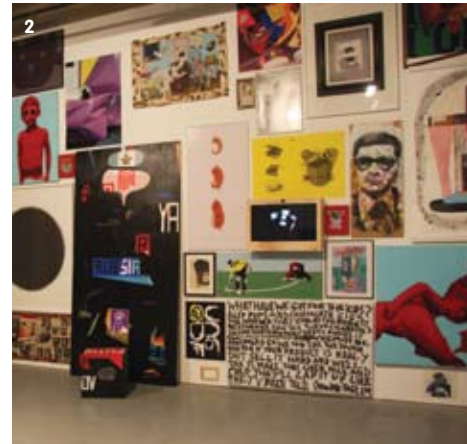
## SHOW LDF EAST

Spearheading the LDF's offering of bright young things was East London, with new additions Origin, the Tramshed and Neville Brody's Anti-Design Festival.

Promoting design that is 'made not manufactured,' Origin, a show produced in conjunction with the Crafts Council by Tent London, celebrated the craft-centric design of glassware, ceramics, jewellery, accessories and bespoke furniture. Lok Ming Fung's oceanic ceramic vessels were a Mix favourite, combining vivid colours with organic decoration and a Russian doll inspired mechanism. Tent itself was, for the second year in a row, confused; picks of the bunch included Tortie Hoare's furniture and Lab Craft, an experimental exhibition produced by the Crafts Council with contributions from Tomoko Azumi and Tord Boontje.

One of the most colourful collaborations of the festival was found at Modus. Along with seminars on colour and design, the space played host to 36 unique PLC chairs, partly sponsored by Global Color Research, each in a unique NCS - Natural Colour System® colour. Global Color Research was also at the Tramshed, discussing colour trends as part of the open discussion seminar series.

Boasting a handful of established brands, the Tramshed saw the likes of De La Espada, Studioilse and PearsonLloyd brought together under one roof. On the same street, Lee Broom opened his impressive new showroom, showcasing his latest lighting creations along with a selection of previous works in a space that sums up his own penchant for mixing old and new.

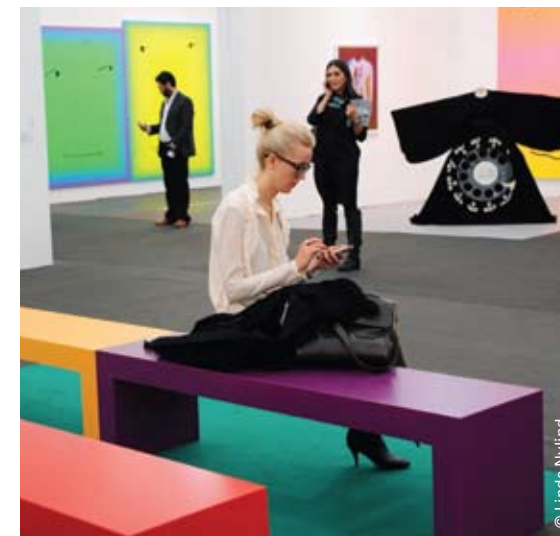
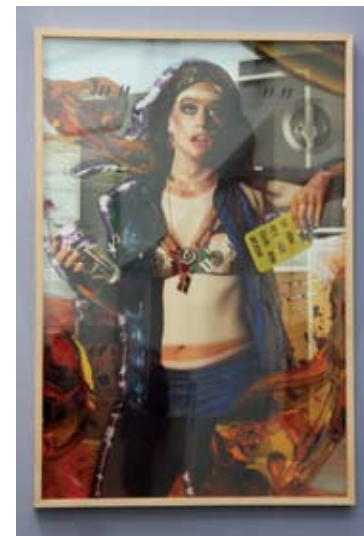


Okay Studio and friends presented one of the most inspiring collections of work in The Visitor, an exhibition inspired by a vision of London as a city full of international visitors. Ed Swan's Mark-Maker table encouraged guests to mark its surface by scratching it using scraps of sandpaper, exposing a kaleidoscope of coloured paints that evolved as individuals interacted with the piece. Hyung-Ok Park also showed a particularly relevant piece at the Made In... Collective's space. The Secret Bookcase allows the user to conceal documents within its structure.

Somewhat eclipsing the smaller shows on Redchurch Street, the Anti-Design Festival challenged notions of gloss and greed, opting to host a series of workshops, a gallery space and a dishevelled office space as an alternative. Steeped in graphic design celebrity (Brody himself exhibited, alongside Stefan Sagmeister and Jonathan Barnbrook) and partially funded by the National Lottery, its declaration of design anarchy was met with scepticism but nevertheless delivered a sharp and challenging show. ■■■■

### Contacts

- [www.antidesignfestival.com](http://www.antidesignfestival.com) (2, 4)
- [www.edswan.com](http://www.edswan.com) (1)
- [www.iamokay.co.uk](http://www.iamokay.co.uk) (9)
- [www.leebroom.com](http://www.leebroom.com) (7)
- [www.lokmingfung.co.uk](http://www.lokmingfung.co.uk) (5, 6)
- [www.londondesignfestival.com](http://www.londondesignfestival.com)
- [www.modusfurniture.co.uk](http://www.modusfurniture.co.uk) (8)
- [www.ncscolour.com](http://www.ncscolour.com) (8)
- [www.okaystudio.org](http://www.okaystudio.org) (1)
- [www.originuk.org](http://www.originuk.org)
- [www.themadeincollective.co.uk](http://www.themadeincollective.co.uk)
- [www.thetramshedevent.co.uk](http://www.thetramshedevent.co.uk)
- [www.tortiehoare.co.uk](http://www.tortiehoare.co.uk) (3)



## SHOW FRIEZE ART FAIR

Frieze Art Fair has firmly established itself as an internationally recognised one-stop-shop for new contemporary art, British or otherwise. Predictably, a handful of larger galleries showed the dregs of older collections by now household names and as always there was a spattering of naively forced oddities. But for those who looked beyond the yester-year Emin sketches and re-interpreted, oversized iPhone models, a reward of fresh, vibrant works awaited.

A favourite from Frame, the area devoted to solo shows produced by young galleries, Frank Haines presented unnerving stills that echoed his occult-influenced performances. Similarly unsettling were Ryan McGinley's Moonmilk photographs that, although premiered last year, continued to mesmerise as lone models pose in paradoxical dreamlike and nightmarish landscapes. Photography followed the bigger is better principle; large C-type prints dwarfed more subtle works with Jane and Louise Wilson and Marilyn Minter proving best in show.

Digital idioms have been creeping into the art world ever more rapidly. Defining the friction between the fast-paced, superficial glamour and sinister shallowness of this emerging world was American artist Ryan Trecartin. Peppering his films and images with references to well known fashion brands and websites, his was some of the most forward-thinking and intriguing work of the show, forcing viewers to enter a hyper-real world of caricaturised personas.

In spite of this digital anomaly, many artists seemed concerned with the materiality of the canvas, choosing to layer colours and textures, one on top of the other, the best of which were by Jim Lambie and Lisa Lapinski. Gabi Trinkaus's eerily incomplete collaged portraits were also fascinating, the melding skin tones a welcome departure from Rob Pruitt's fluorescent works, championed by a host of different dealers.

Stephen Friedman Gallery unashamedly played to the crowd in creating a jail cell style installation of Scottish artist David Shrigley's work. Complete with stuffed dogs and iron railings, the previously outsider art jarred with much of the established work on show. Also raising smiles was Gavin Turk's Les Bikes de Bois Rond where, for a penny, participants could hire one of Turk's colourful bicycles (an obvious homage to André Cadere's Barres de Bois Rond) to cycle around the sculpture park, where Tomas Saraceno's smaller structures were recreated in walk-in scale. ■■■■

### Contacts

- [www.friezeartfair.com](http://www.friezeartfair.com)